



# Be a Part of the Cure

**Honor a Memory, Share Encouragement  
or Show your Support**

**by Donating Trinkets & Memorabilia**

## Donate by May 29th

### Questions and Pickup

Janise Crow  
814-883-3862  
jc@mmhairfashions.com

### Drop Off Locations:

The Hair Lady, Wig Shop  
2518 Sleepy Hollow Dr.  
State College PA  
(basket on porch)

Geisinger Scenery Park  
Attn: Michelle Huerbin  
200 Scenery Drive  
State College, PA

### Donation Criteria:

- Items are considered donated and will not be returned
- Size: 3" or smaller
- Condition: pre-owned, recycled, new, store bought, handmade, vintage, antique
- Any color & shape
- Write: a sentence about the sentiment behind the trinket "what it means"
- Names: optional, if you would like your name or someone else's name identified list 1 or 2 names
- How to package: place items & write up in concealed envelope labeled as directed by drop off locations (see above)



My name is Janise Crow, also know as The Hair Lady, I am also a jewelry designer. Sentimental Jewelry Designs are my specialty. I am passionate about helping people share their stories, remember loved ones or offer encouragement by creating wearable art made from meaningful trinkets and memorabilia.

I invite you and anyone who has been touched by cancer to be a part of my Cancer Cure Design project that will be on display at PSU in the HUB in the fall.

Proceeds from the sale of this piece will go to the American Cancer Society and/or Pink Zone depending on what and how many items I receive.

### How You Can Participate:

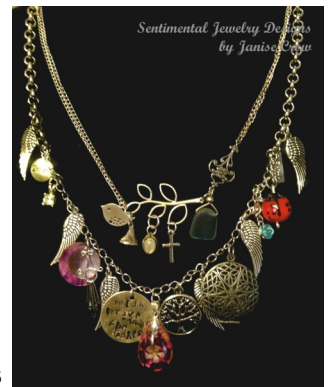
Help me tell your story by donating an item/trinket that would represent your cancer related sentiment, person, event, memory, encouragement, hope, strength, love or joy. I am collecting trinkets, memorabilia, old jewelry, brooches, buttons, something handmade, key, charm, chains, lockets, watches, things that represents the medical side, just about anything.

The donated items have personal meaning and that's the story I'd like to tell through this piece of wearable art. I'd also like to include a 1 sentence description about the significance of the donated trinket, if possible.

### Examples of Sentimental Jewelry Designs:

The charm necklace above was designed for a woman diagnosed with cancer. A group of her friends donated charms that represented a special memory. It offers her support and encouragement during treatments.

The lovely necklace to the right represents sweet memories of a grandmother. Two brooches that once belonged to the grandmother were creatively repurposed into a new modern design that the granddaughter enjoys wearing with thoughts of her gram.



For more examples visit: <http://www.mmhairfashions.com/sentimental-jewelry.html>